

# KASHISH TOWER B

*The coveted lifestyle residency*



# Welcome to Kashish Tower

Set to grace the city's impressive skyline, Kashish Tower will be one such landmark address located right at the heart of Thane (w)



# Location Map

Kashish Tower - It is at an arm's length from Mulund Check Naka, close to Eastern Express Highway and Thane Station. **Yet, the complex is pollution free.**



Teen Hath Naka, Thane



LBS Road



Mulund, Mumbai

# Activity & Recreation

Gym



Football Turf



Temple



Recreation Ground

Everything **You** need is  
next door

## Internal Amenities | Best in class amenities for your modern home.

- Earthquake Resistant Construction
- TMT Steel
- Anti Termite Treatment at Plinth Level
- Anodized / coated, Aluminum Windows
- High speed Elevators From Otis/Schindler\*
- Round the clock security
- Inter connected Communication system between all flats, lobby and security
- Fully furnished Society Office
- Premium Flooring & Wall Tiles
- Well Finished painted walls
- Internet ready flats, TV, Phone points in bed rooms, living rooms
- High quality geysers in toilets
- Best quality concealed wiring, switches, circuit breakers
- Power backup for lifts, Staircase, Passage common areas
- High quality CP sanitary fittings with concealed plumbing
- Additional renewable water source by rainwater harvesting
- Water purifier in kitchen
- Provision for Piped gas,
- Fire fighting systems
- Air conditioners in all habitable rooms
- Servants / Drivers toilet on Ground Floor

\*or equivalent

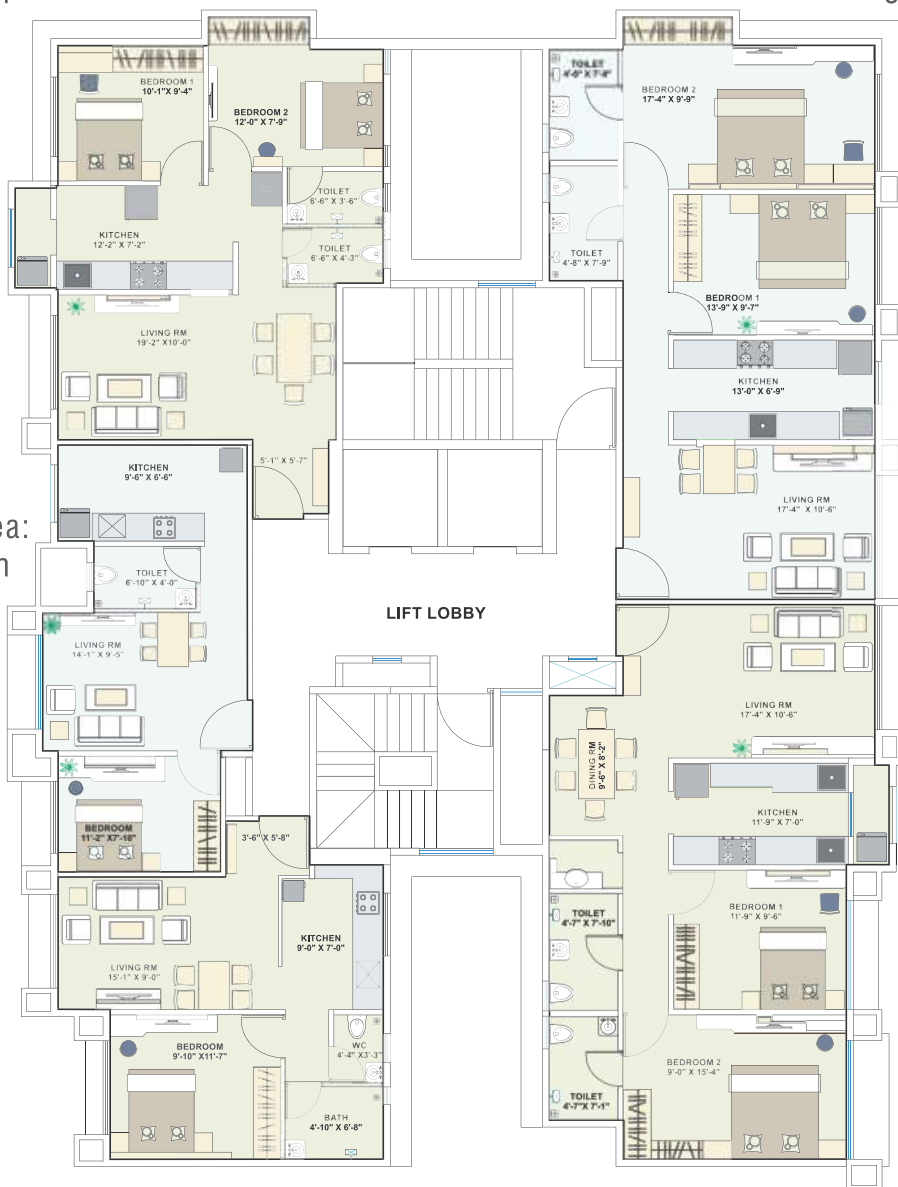
# Floor Plan

Not for Floors 1,8,11,13,16-18

**Flat No.5**  
RERA Area:  
56.33sqm

**Flat No.1**  
RERA Area:  
52.21sqm

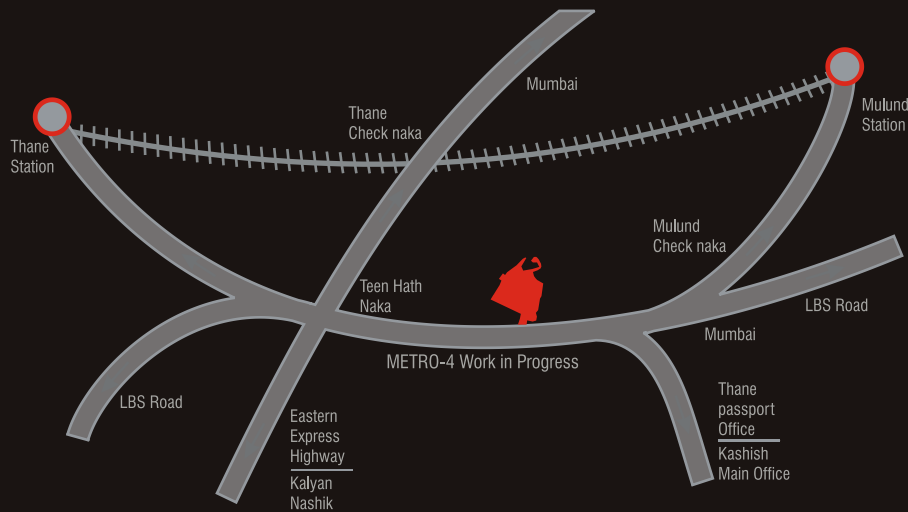
**Flat No.4**  
RERA Area:  
29.14sqm



**Flat No.3**  
RERA Area:  
32.07sqm

**Flat No.2**  
RERA Area:  
69.12sqm





[www.kashishpark.com](http://www.kashishpark.com)

Kashish Park, FGP Complex, LBS Marg, Mulund Check Naka, Thane 400 604.

**Call: 9920-711-911 / 9930-711-911**

Rera Registration No. P51700001799 \ Website: [http:// mahareraonline.gov.in](http://mahareraonline.gov.in)

**Disclaimer : [Important]**

Only the Tower B has been registered with MahaRERA as an ongoing project.

The Kashish Park layout has been displayed to show the location of Tower B in the Kashish Park Complex and is not as per the approved layout and is for representational purposes only and the artist's impression. It is neither to scale nor is it meant to accurately show the existing / proposed structures etc.

The Public Parking Plaza & TMC Building, football ground, gym, Temple and children's play area are situated on the portions of the layout that have already been handed over to the Thane Municipal Corporation and have been constructed/ developed by the Thane Municipal Corporation.

The 18 m wide DP road and Public Parking reservation shown adjoining the Kashish Park Layout are a part of the upcoming project Godrej Alive and not a part of the layout.

All the above have been shown as a statement of fact and not to induce the prospective customer to purchase.

The plots reserved for future development are proposed to be developed having multi-storeyed buildings with basement/s, podium/s, shops etc.

The floor plan is not as per the approved plan but is a suggested layout for utilisation of the flat by the allottee.

This is not an offer, an invitation to offer and/or commitment of any nature. The images artists impressions or real images on site have been modified for better artistic impression. The furniture, Accessories, Paintings, Decorative items, Electronic goods, Additional fittings and Loose fixtures, Specifications and the Colour, shade and size of the tiles/ fitments shown in the image are only indicative in nature and do not form the part of the Standard Specifications / Amenities / Services to be provided in the flat. All specifications of the Flat/Projects shall be as per the final agreement between the parties. Recipients are advised to use their discretion in relying on the information / Amenities described / shown herein.

Whilst every care has been taken in preparing these particulars, the Promoters give no warranty, express or implied, as to the completeness or accuracy of the information contained herein. These particulars are subject to errors, omissions, changes or changes as required by the approving or other Government authorities. The Promoters shall not be held liable for negligence, and / or for any direct or indirect consequential losses or damages arising from the use of this information. You should satisfy yourself about the completeness or accuracy of any information or materials by visiting the site office and inspecting all relevant documents. The information contained herein does not form part of an offer or contract.